

How to Switch Frame Grabbers

January 26, 2004

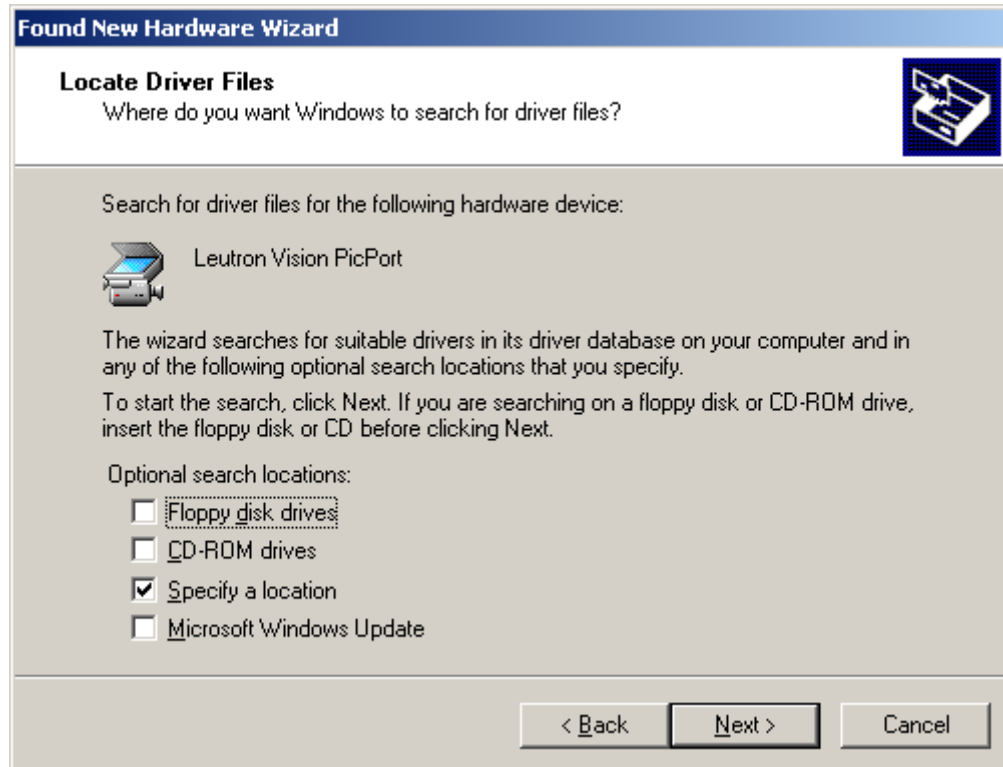
Sometimes it is necessary to change from one type of frame grabber to another in Windows. The most common occurrence is when the wrong type frame grabber driver is loaded during the initial installation.

1. Load the new driver from the FTA CDROM, if it has not already been loaded.
2. Remove the old frame grabber hardware and install the new.
3. Restart the computer. After a minute or so, the Found New Hardware wizard should appear. The following screen shots are for Windows2000, but XP is similar. Basically you must *Browse* and force Windows to *Display* all available choices of frame grabber drivers. If left alone, Windows will choose the old driver, which is not what you want. In the following example, we switch from Leutron Vision to MuTech.

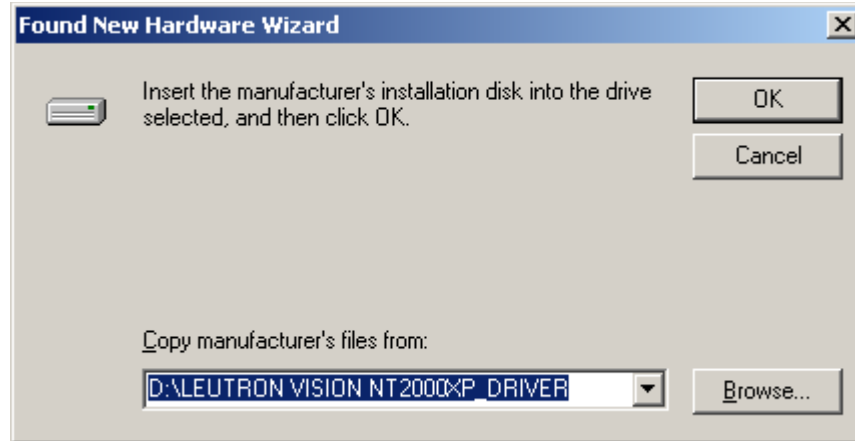




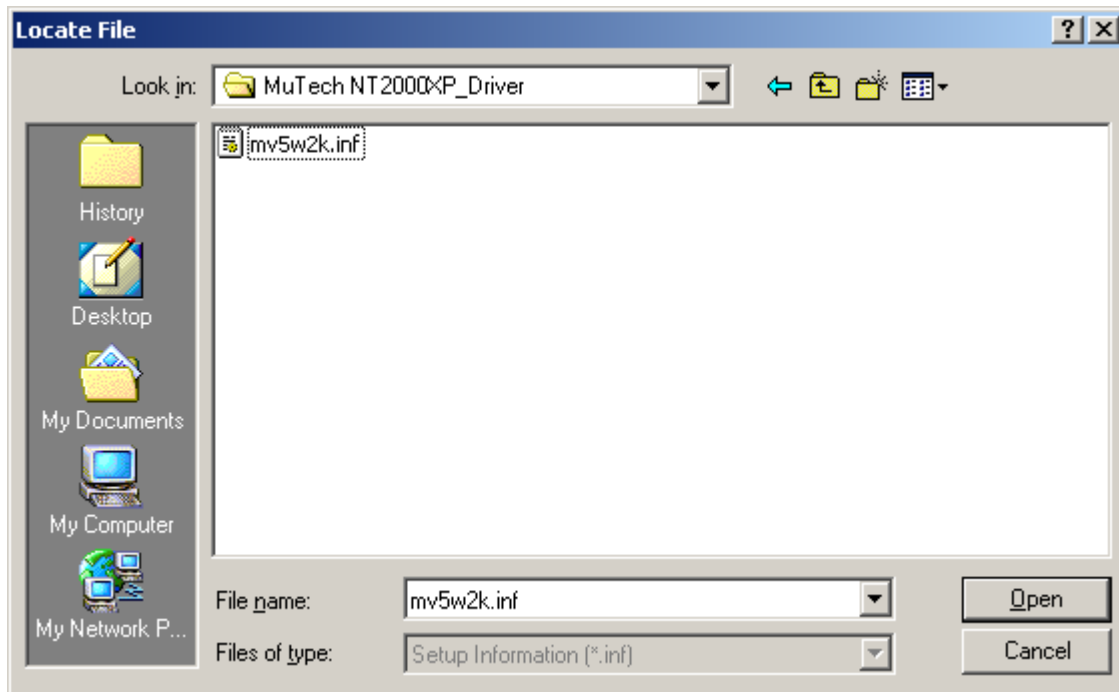
Notice the perceived frame grabber is a Leutron Vision PicPort. This is not what we want, so we *Search* because this will let us choose the correct one.



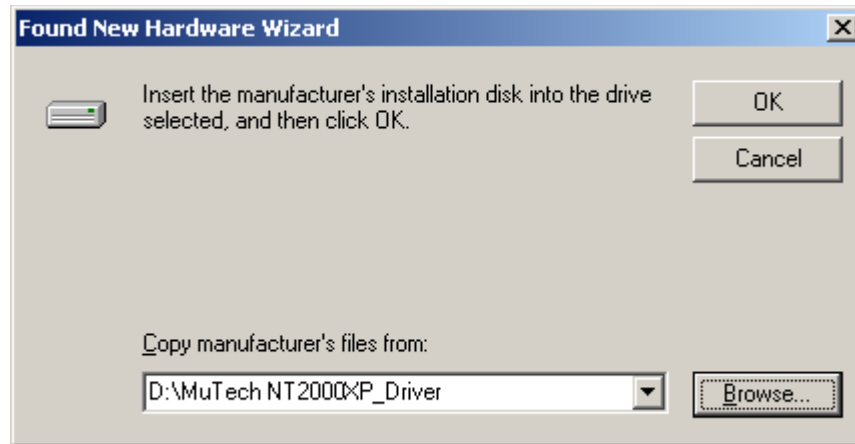
We want to *Specify* a location.



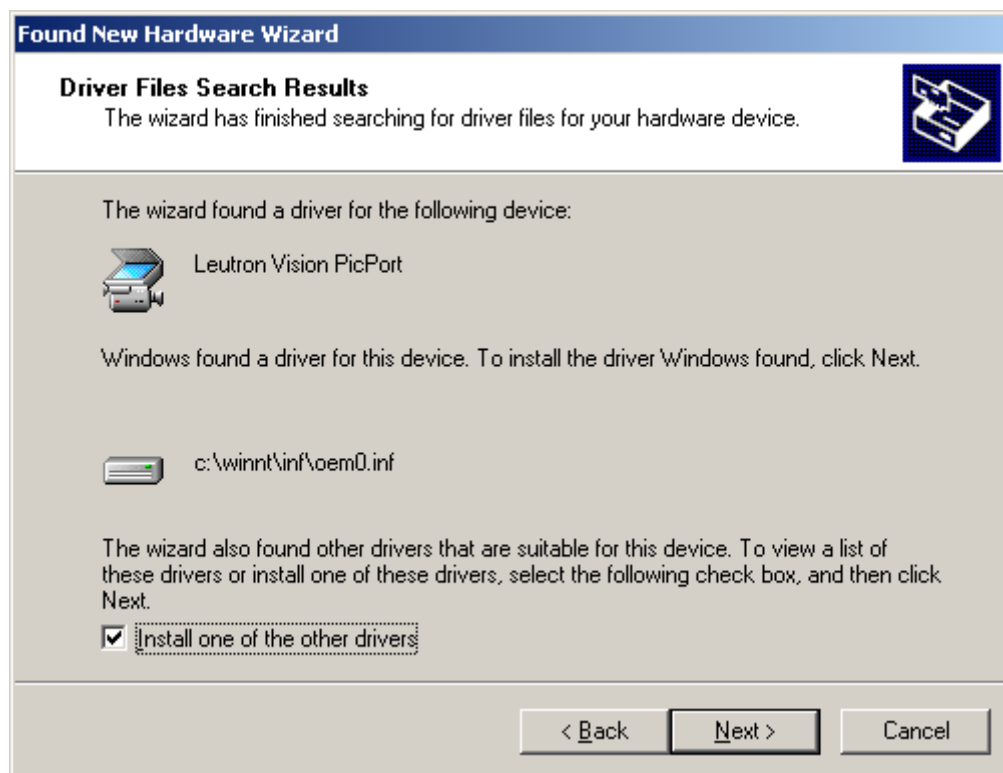
This is the old driver, so we choose to *Browse*.



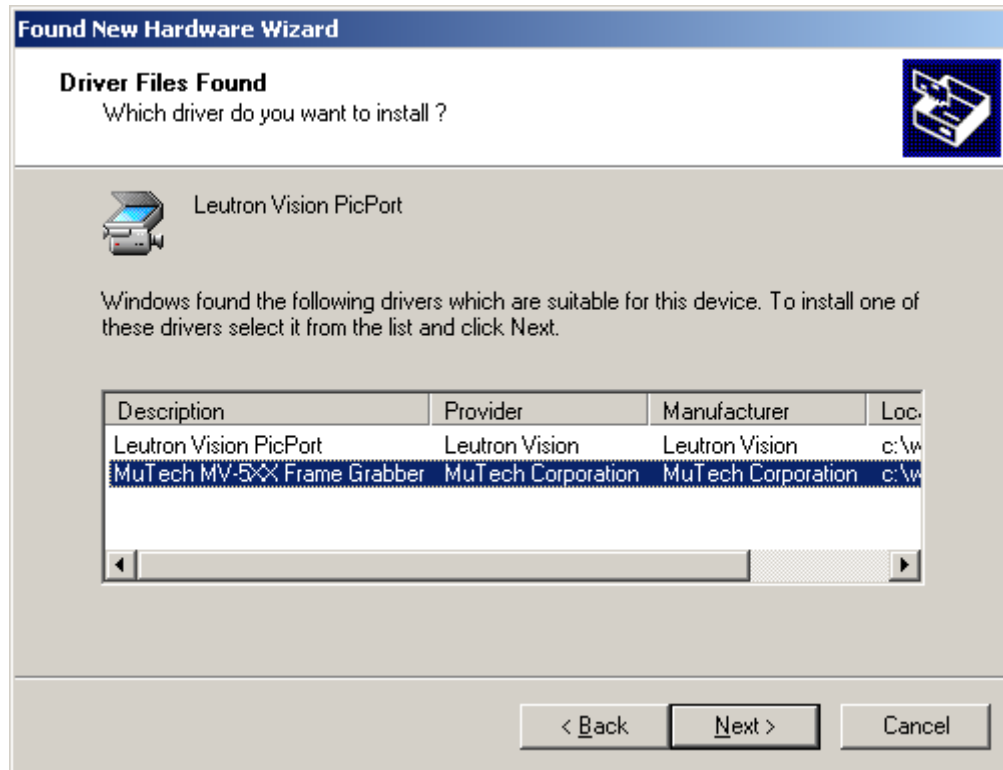
We *Browse* to the location of the correct driver. In this case, it is on the CDROM.
We click on the driver file and the *Open*.



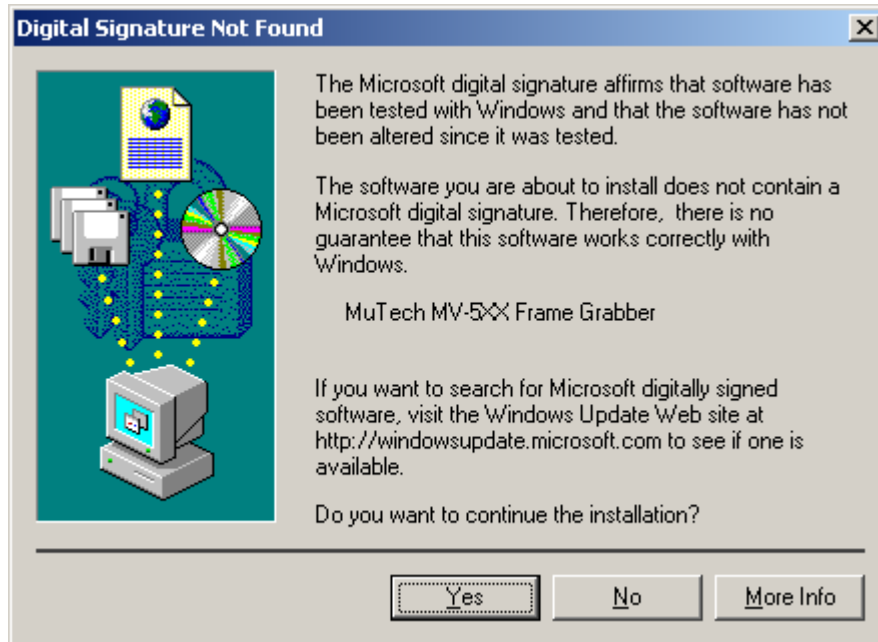
This screen is to verify our choice. We say OK.



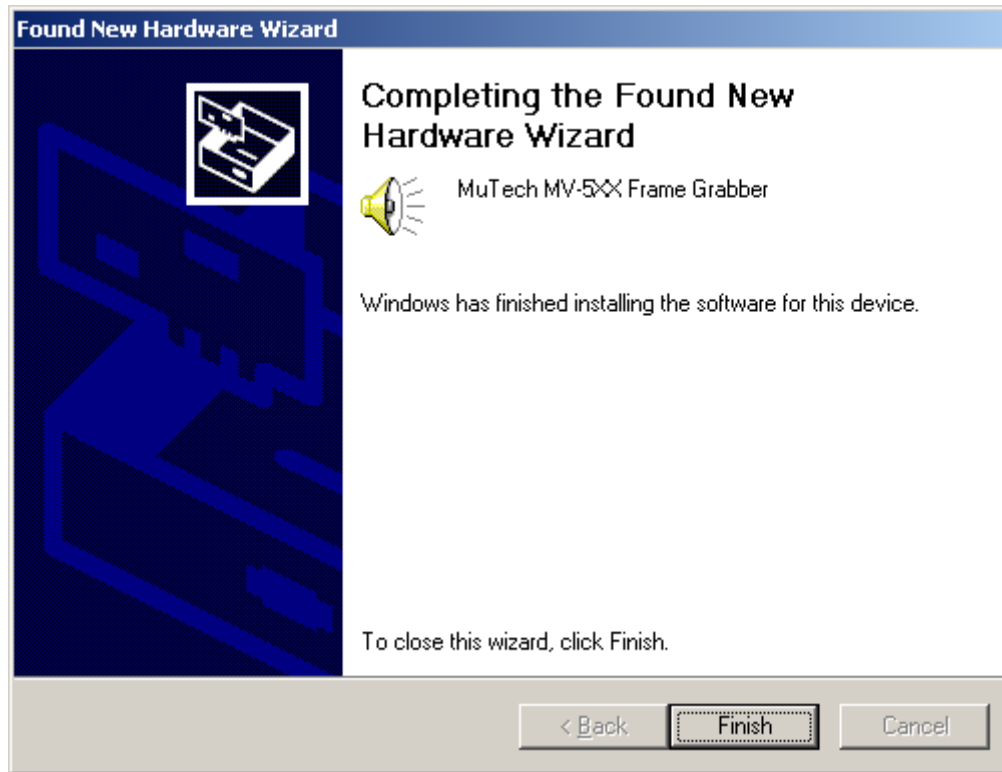
Windows still does not have it right. "oem0.inf" will contain the old Leutron driver.
We check *Install one of the other drivers*.



The initial choice, from Windows, will be the Leutron driver.
We click on the MuTech to select it.



No problem. Click Yes. At least it now refers to MuTech.



Success. You may have to restart the computer.

File: HowToSwitchFrameGrabbers.doc